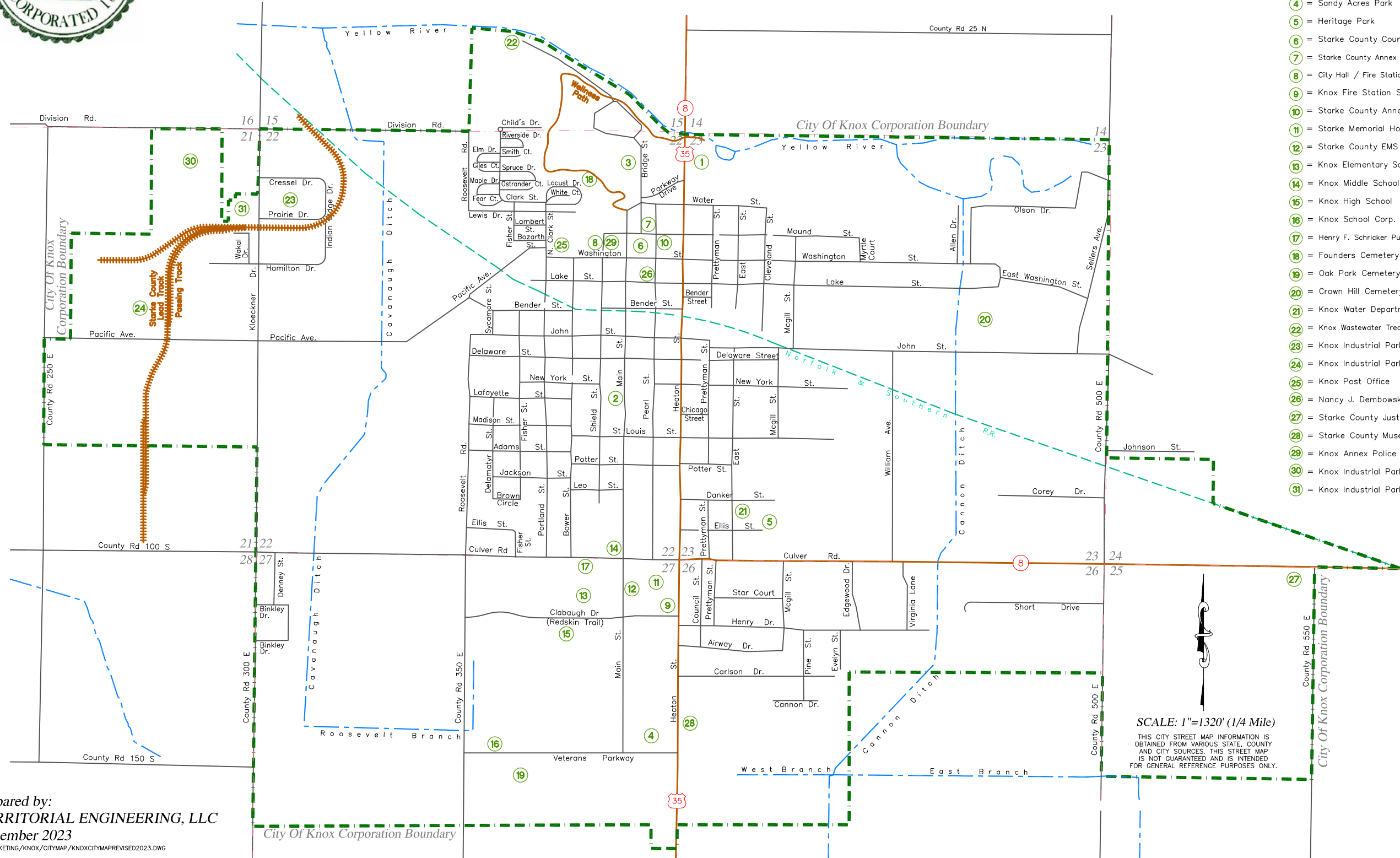


CITY OF KNOX



AREAS OF INTEREST

- ① = Gateway Depot
- ② = Schricker House
- ③ = Wythogan Park
- ④ = Sandy Acres Park
- ⑤ = Heritage Park
- ⑥ = Starke County Courthouse
- ⑦ = Starke County Annex #1
- ⑧ = City Hall / Fire Station North
- ⑨ = Knox Fire Station South
- ⑩ = Starke County Annex #2
- ⑪ = Starke Memorial Hospital
- ⑫ = Starke County EMS Knox Station
- ⑬ = Knox Elementary School
- ⑭ = Knox Middle School
- ⑮ = Knox High School
- ⑯ = Knox School Corp. Bus Barn
- ⑰ = Henry F. Schricker Public Library
- ⑱ = Founders Cemetery
- ⑲ = Oak Park Cemetery
- ⑳ = Crown Hill Cemetery
- ㉑ = Knox Water Department
- ㉒ = Knox Wastewater Treatment Plant
- ㉓ = Knox Industrial Park I
- ㉔ = Knox Industrial Park II
- ㉕ = Knox Post Office
- ㉖ = Nancy J. Dembowski Community Center
- ㉗ = Starke County Justice Center
- ㉘ = Starke County Museum
- ㉙ = Knox Annex Police
- ㉚ = Knox Industrial Park III
- ㉛ = Knox Industrial Park IV



prepared by:
TERRITORIAL ENGINEERING, LLC
 December 2023
P:\MARKETING\KNOX\CITYMAP\KNOXCITYMAPREVISED2023.DWG

SCALE: 1"=1320' (1/4 Mile)
 THIS CITY STREET MAP INFORMATION IS OBTAINED FROM VARIOUS STATE, COUNTY AND CITY SOURCES. THIS STREET MAP IS NOT GUARANTEED AND IS INTENDED FOR GENERAL REFERENCE PURPOSES ONLY.